

WEIHONG

专业·专心·专注

NcEditor V12

Designed for Laser Cutting

Where there is Motion Control,
there is WEIHONG



2016

Table of Content

1

Overview

2

Hardware

3

Software

4

More

1

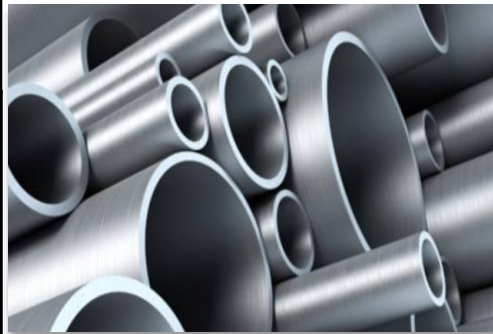
NcEditor V12

- Developed in 2011, designed for laser cutting /plasma cutting
- Covers all common-used functions & technics
- Stable, easy to use , easy to maintain and upgrade
- Widely applied in industries of metal cutting, tube cutting, manufacturing of die & mold, as well as arts and crafts, etc.

2



3



4



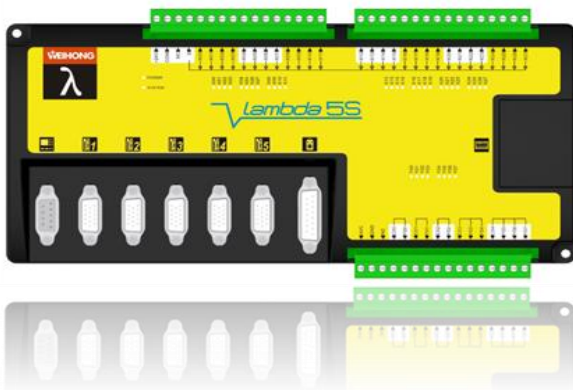
END

2

Hardware



PM85A/PM95



Lambda 5S



1

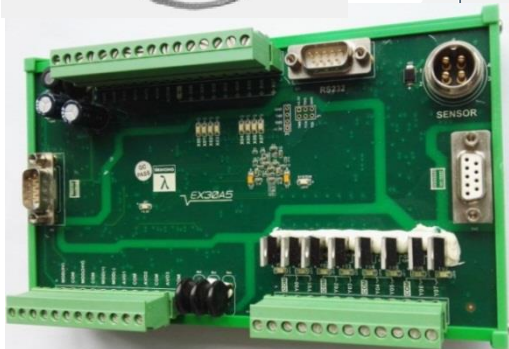
3

4

END

2

Height Sensor Unit



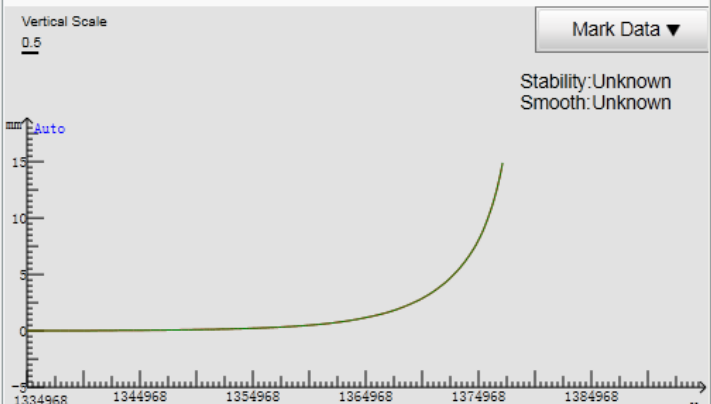
Follow-up Control

System	Follow Enable: Disabled	Follow Height: 1.000 mm
Param	Z Speed: 0.000	Max Speed: 20000mm/min
	Z Position: 1.000	Sensitivity: 10
	Capacitance: 1363982	Zup Position: -10 mm

Vertical Scale
0.5

Mark Data ▼

Stability: Unknown
Smooth: Unknown



WHB05S connection conflict

Axes	MachCoord
X	260.653
Y	403.819
Z	1.000

Y+ Z+
X- Jog X+
Y- Z-

Estop

- Static resolution 0.01mm
- Calibrate on metal & non-metal

1

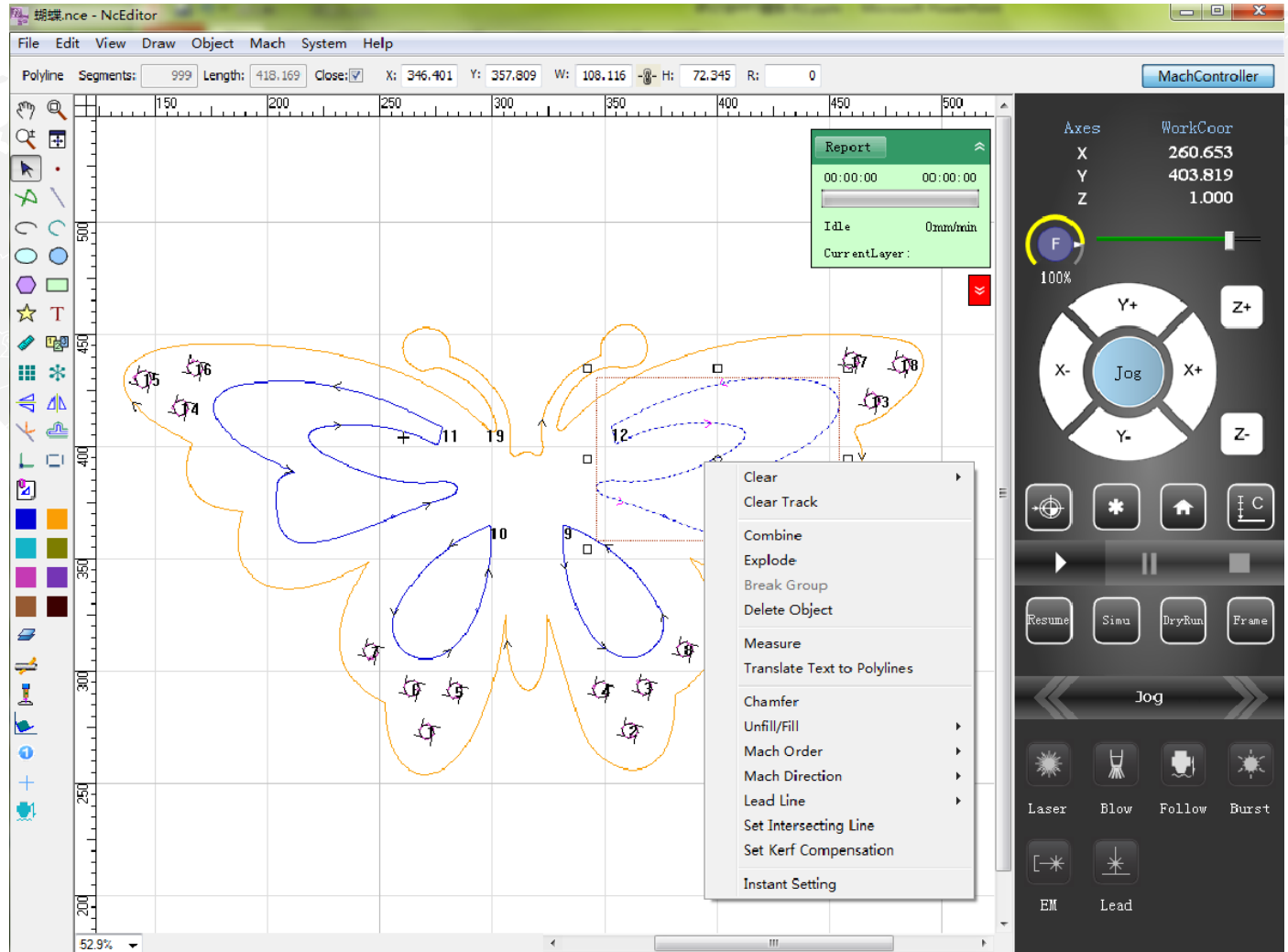
3

4

END

3

Nc---Editor



1

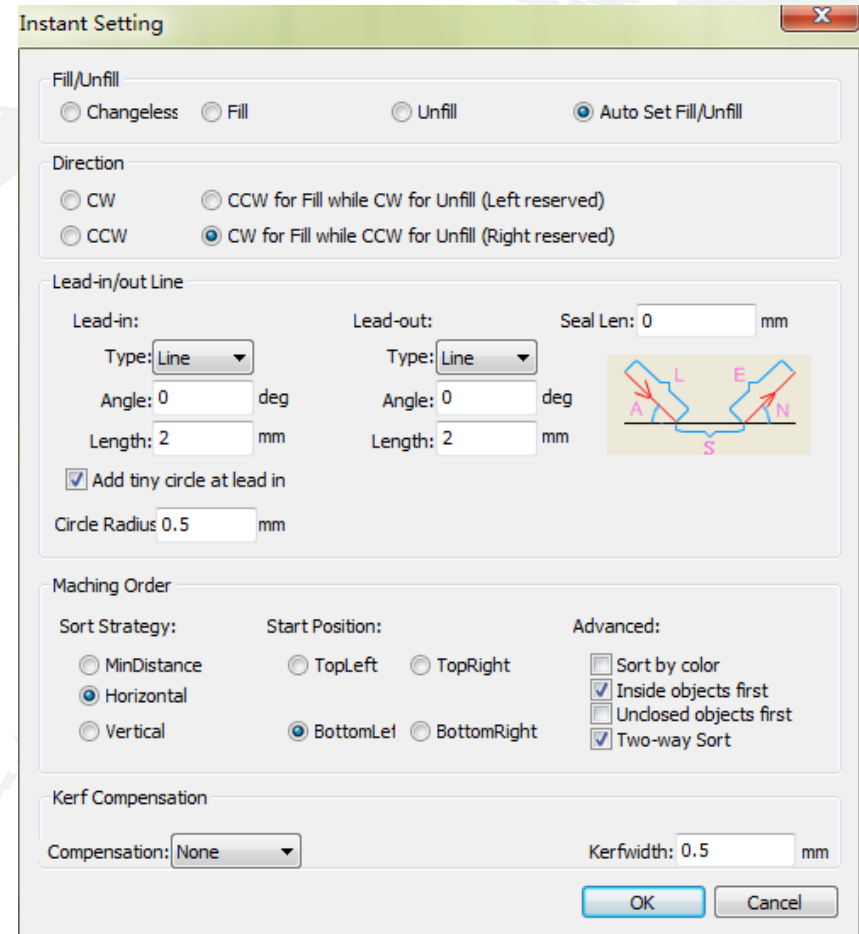
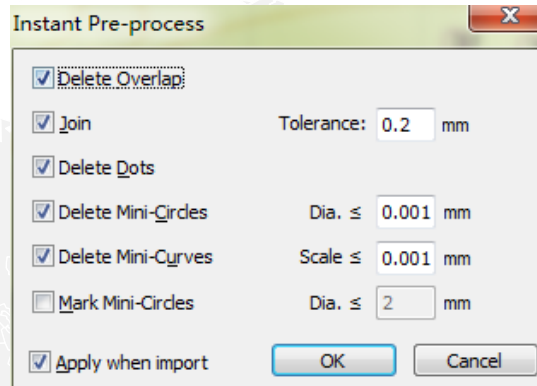
2

4

END

3

Instant Setting



Besides:

- Add cooling point
- Add bridge
- Add micro-joints
- Chamfer
- Scanning cutting
- Releasing angle

1

2

4

END

3

Layer

Basic:

- Speed
- Power
- Frequency
- Gas pressure
- Pierce mode

...

Advanced:

- Power curve
- Focus control
- Slow start
- Cutting at fixed height
- Side blow

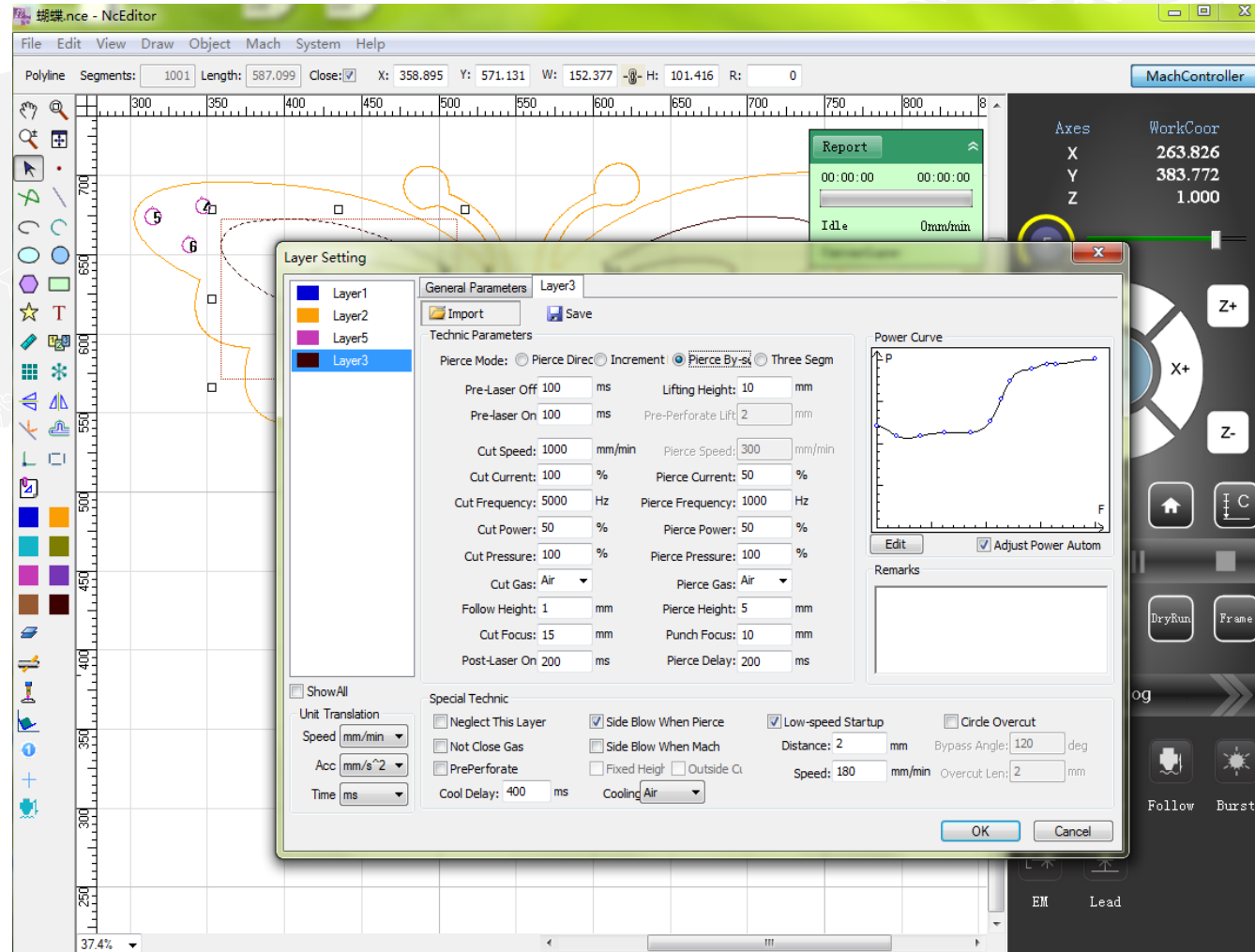
...

1

2

4

END



3

Machining

The screenshot displays the NcEditor software interface. The main workspace shows a butterfly-shaped CNC program with various tool paths and numbered points (0-19). A 'Report' window shows the following data:

Report	00:00:39	00:00:00
Running	800mm/min	
CurrentLayer:	1	

The 'Statistics Information' window contains the following table:

File name	Hole count	Cut len.(m)	G00 len.(m)	Cut time	Total time	Cycle times	Start time
蝴蝶.nce	0	0.000	0.388	00:00:00	00:00:00	Part	10:16:52 2016-07-08
蝴蝶.nce	3	0.053	0.115	00:00:04	00:00:05	Part	10:17:26 2016-07-08
蝴蝶.nce	12	0.949	0.749	00:01:01	00:01:06	Part	10:18:05 2016-07-08

The 'Charging' dialog box shows the following information:

Hole count: 12 Unit price: 3 RMB/h
 Cut len.: 0.949 m Unit price: 5 RMB/hr
 Calculate 40.74 RMB

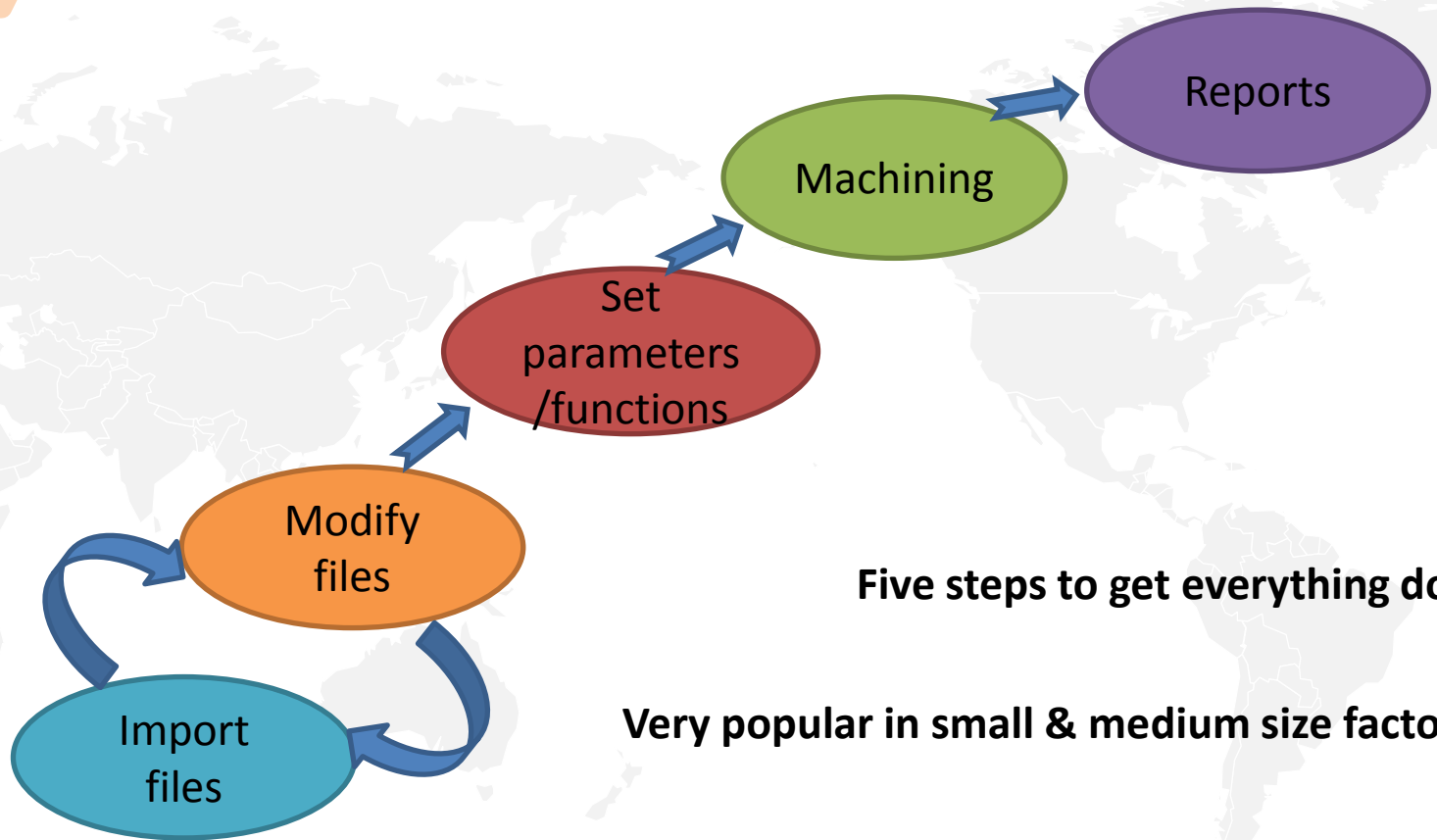
1

2

4

END

3



Five steps to get everything done

Very popular in small & medium size factory

1

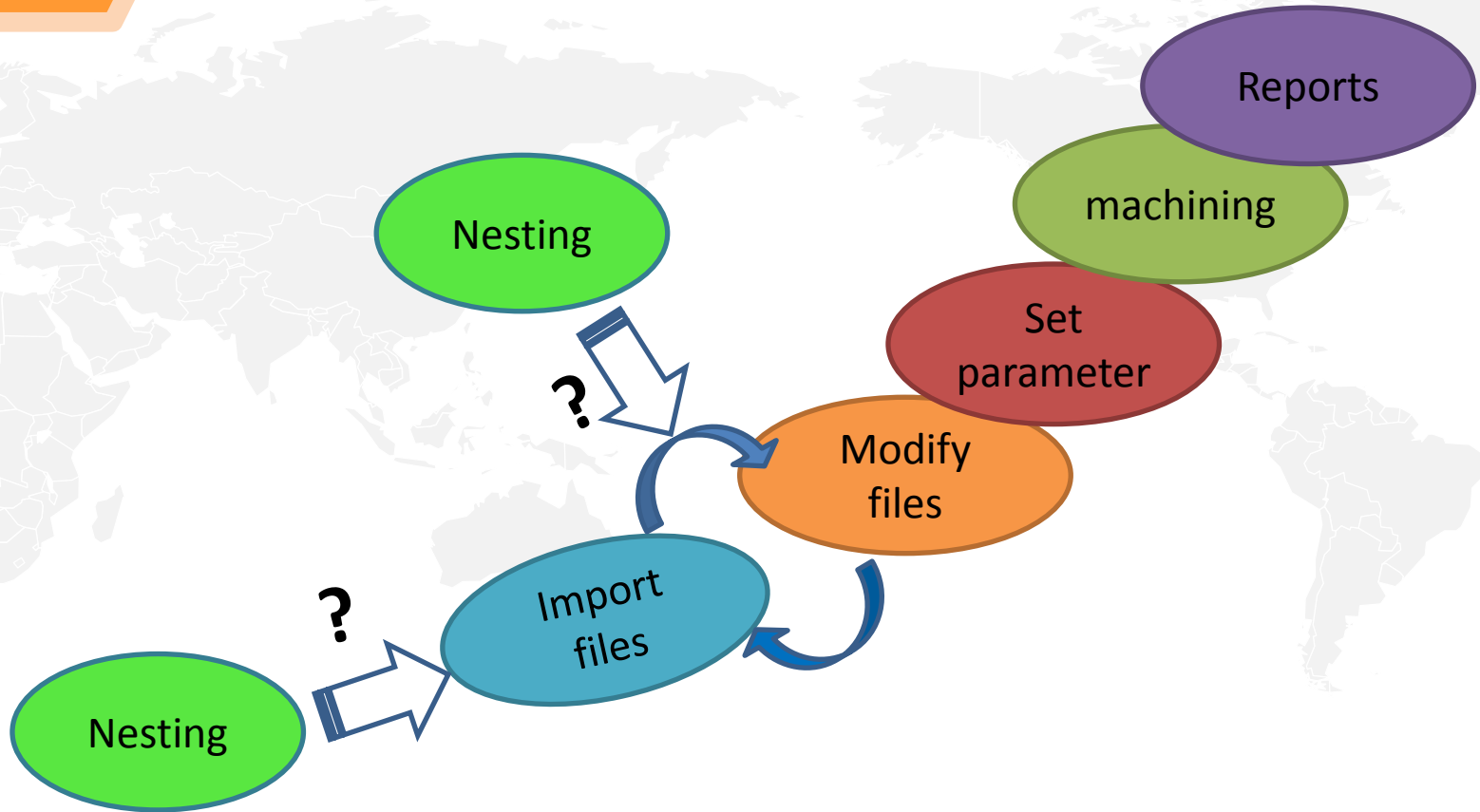
2

4

END

4

More?



1

2

3

4

4

Nesting

The screenshot shows the NcEditor software interface with a 'Nest' dialog box open. The dialog box contains the following data:

Parts					
Name	Priority	Available	Nested	Rotate Angle	Part Size
Part1	10	20	20	Free Rotate	200.0*20.00
Part2	10	20	-	Free Rotate	72.14*72.14
Part3	10	20	20	Free Rotate	138.8*96.00
Part4	10	20	8	Free Rotate	100.0*72.34
Part5	10	20	14	Free Rotate	100.0*76.74
Part6	10	20	20	Free Rotate	100.0*88.64

Materials					
Name	Type	Available	Nested	Width	Height
Default	Rectangle	1	1	500	1000

Sheets			
Name	Count	Material Name	Utilization
Sheet1	1	Default	55.1%

The 'Nest' dialog box also includes a preview window on the right showing a 2D layout of the nested parts on a sheet. At the bottom of the dialog, there are buttons for 'Setting', 'Execute', 'OK', and 'Cancel'.

1

2

3

4

end

THE

Cooperation:

1. What's the advantages of the nesting function in iGems?
2. Can the two software be integrated into one?
3. Price and after-sales services

1

2

3

4

Thank you